

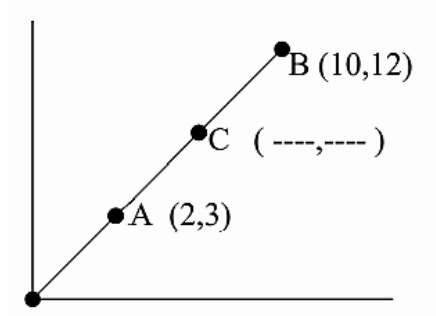
Q1. Look at the diagram.

The points  $(-1, 1)$ ,  $(2, 5)$  and  $(6, 2)$  are three of the four vertices of a square. Plot the co-ordinates on the grid.

a) What are the co-ordinates of the fourth vertex?

\_\_\_\_\_

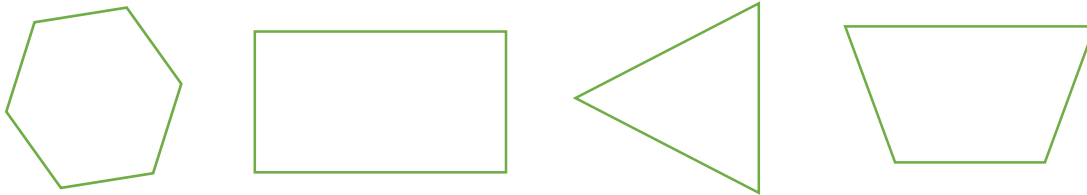
b) Look at the diagram.




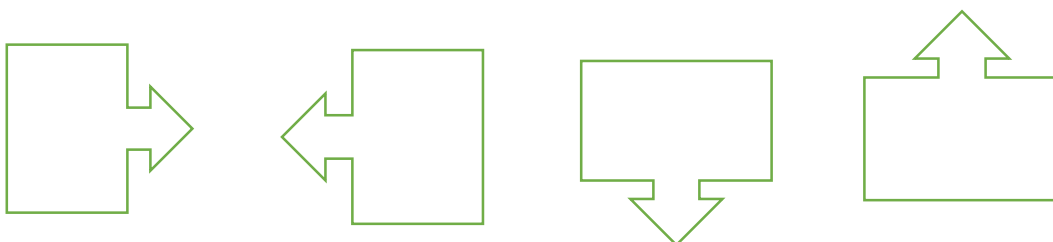
c) C is halfway between A and B. What are the co-ordinates of C?

\_\_\_\_\_

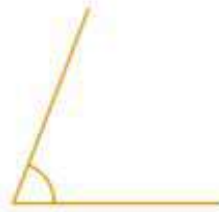
Q2. Tick the shape with only one pair of parallel sides.



Q3. This  Shape is rotated through  $90^\circ$  anti-clockwise. Tick the shape that shows the new position.

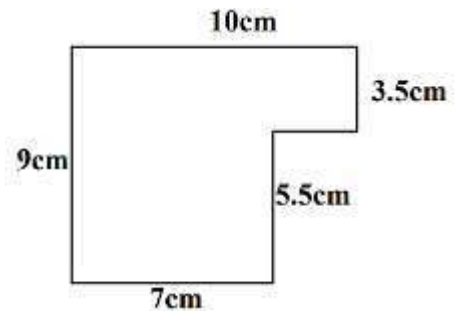


Q4. Use a protractor to measure these angles. Tick the shape with an angle of  $69^\circ$



Q5. What is the perimeter of the shape?

\_\_\_\_\_cm



b) What is the area of the whole shape?

\_\_\_\_\_cm<sup>2</sup>

Q6. Look at the rectangle.

What is the length of side A?

\_\_\_\_\_cm

